

AVAILABLE SUBJECT TO LANDLORD
ACQUIRING VACANT POSSESSION



M Churnet Park

TO LET Industrial/Warehouse Unit
2,659 sq.ft (247 sq.m)

Unit 3F, Macclesfield Road, Leek, Staffordshire. ST13 8YH

- Ideal for retail, trade counter, leisure & general business use (subject to planning)
- Adjacent to a large Sainsbury's store, Mcdonalds, and Marston's restaurant
- Ample onsite car parking
- Main road access located just off A523 Macclesfield Road

LCP.
part of IMCore

01384
400123

searchlcp.co.uk

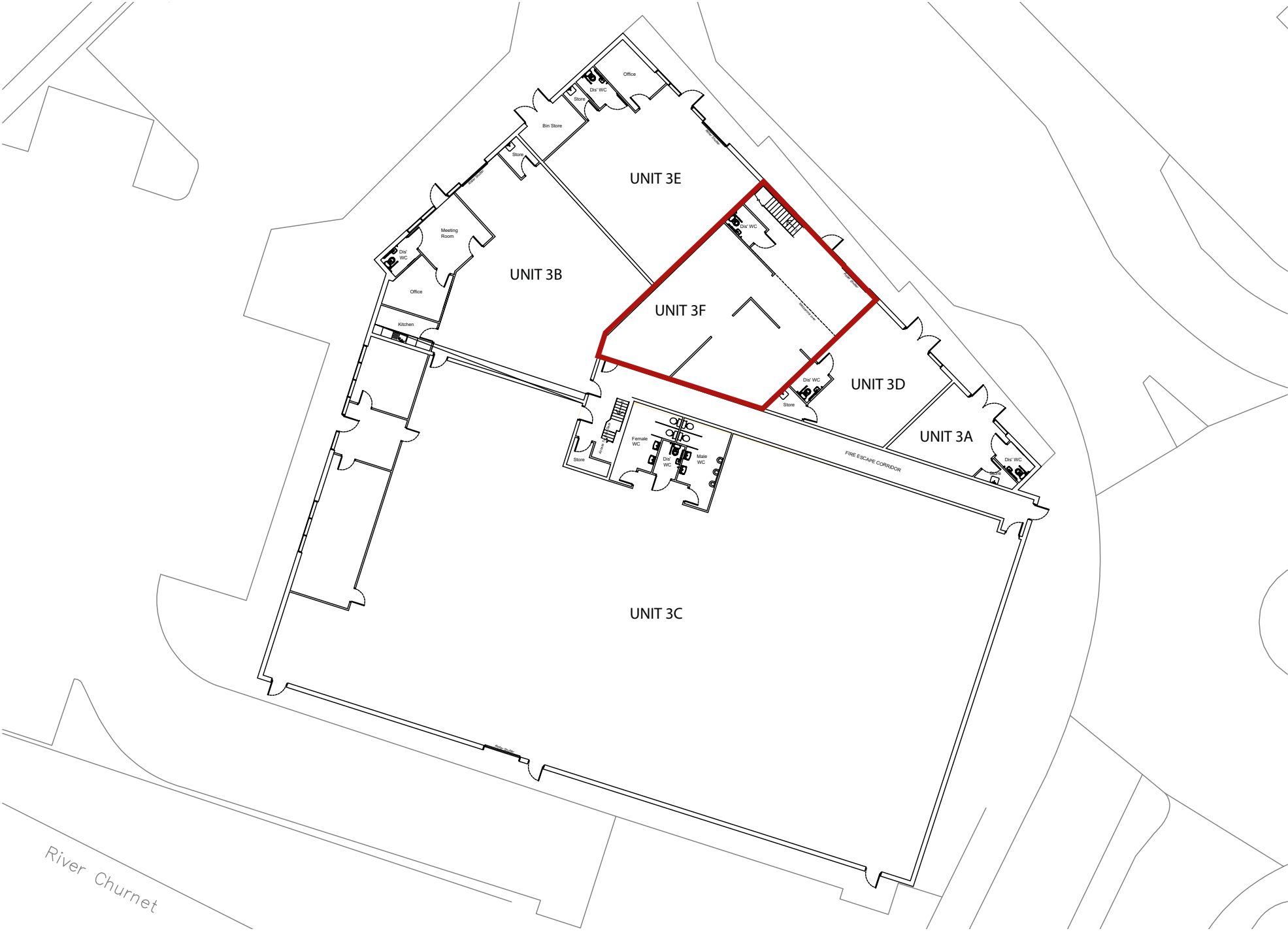


Unit 3F, Macclesfield Road, Leek, Staffordshire. ST13 8YH



• c.10,251 DAILY VEHICLE MOVEMENTS (2023)

Unit 3F, Macclesfield Road, Leek, Staffordshire. ST13 8YH



Unit 3F Macclesfield Road, Leek, Staffordshire. ST13 8YH

Areas (Approx. Gross Internal)

Ground Floor	1,515 sq.ft	(141 sq.m)
First Floor	1,144 sq.ft	(106 sq.m)
Total	2,659 sq.ft	(247 sq.m)

Description:

The estate was constructed in 2012 and comprises a variety of steel portal framed units. Each unit benefits from toilet facilities, fluorescent lighting and glazed entrance doors with a mixture of loading doors.

Externally, there is a good level of car parking and loading access obtained via shared loading yards.

Rent

POA

Business Rates

TBC

Service Charge

The unit participates in a service charge scheme. The landlord will insure the premises, the premiums to be recovered from the tenant.

Insurance

Interested parties are to make their own enquiries regarding rates with the local authority. Staffordshire Moorland District Council 0345 605 3010

Energy Performance

EPC rating of C. Further information available upon request.

Planning

The units are suitable for a variety of uses (Subject to planning). Interested parties are to make their own enquiries regarding rates with the local authority. Staffordshire Moorland District Council 0345 605 3010

Legal and Surveyor Costs

Each party will be responsible for their own legal costs in connection with the granting of a lease.



Location - ST13 8YH

Churnet Park is prominently located on Macclesfield Road (A523) in Leek, Staffordshire, providing direct access to nearby towns such as Macclesfield, Buxton, and Stoke-on-Trent. The site benefits from excellent road connectivity, with easy links to the A53, A50, and A500, offering convenient access to the M6 and the wider Midlands motorway network.

This strategic position makes it well-suited for businesses requiring regional reach across Staffordshire, Cheshire, and Greater Manchester. The park also benefits from close proximity to Leek town centre and local amenities, enhancing its appeal for both trade counter and light industrial use.



Viewing

Strictly via prior appointment with the appointed agents



Andrew Groves

07966 263287

andrew.groves@harrislamb.com

Mike Burr

07827 342460

mike.burr@harrislamb.com



David Charlton

07471 215144

DCharlton@lcpproperties.co.uk

MISREPRESENTATION ACT. 1967 London & Cambridge Properties Limited (Company Number 02895002) the registered office of which is at LCP House, Pensnett Estate, Kingswinford, West Midlands DY6 7NA its subsidiaries (as defined in section 1156 of the Companies Act 2006) associated companies and employees ("we") give notice that: Whilst these particulars are believed to be correct no guarantee or warranty is given, or implied therein, nor do they form any part of a contract. [We do our best to ensure all information in this brochure is accurate. If you find any inaccurate information, please let us know and where appropriate, we will correct it.] We make no representation that information is accurate and up to date or complete. We accept no liability for any loss or damage caused by inaccurate information. [This brochure gives a large amount of [statistical] information and there will inevitably be errors in it]. Intending purchasers or tenants should not rely on the particulars in this brochure as statements or representations of fact but should satisfy themselves by inspection or otherwise as to the correctness of each of them. We provide this brochure free of charge and on the basis of no liability for the information given. In no event shall we be liable to you for any direct or indirect or consequential loss, loss of profit, revenue or goodwill arising from your use of the information contained herein. All terms implied by law are excluded to the fullest extent permitted by law. No person in our employment has any authority to make or give any representation or warranty whatsoever in relation to the property. SUBJECT TO CONTRACT. We recommend that legal advice is taken on all documentation before entering into a contract. You should be aware that the Code of Practice on Commercial Leases in England and Wales strongly recommends you seek professional advice from a qualified surveyor, solicitor or licensed conveyancer before agreeing or signing a business tenancy agreement. The Code is available through professional institutions and trade associations or through the website <https://www.rics.org/uk/upholding-professional-standards/sector-standards/real-estate/code-for-leasing-business-premises-1st-edition/>. LCP's privacy notices that apply to its use of your personal information are at www.lcpgroup.co.uk/policies. The privacy notice that applies to you will depend on the nature of your relationship with LCP, and in some cases more than one may apply to you. LCP's privacy policy giving a high level overview of how LCP approaches data protection and your personal information can be found at www.lcpproperties.co.uk/uploads/files/LCP-Privacy-Web-and-Data-Policy-May-2018.pdf.