

# WULFRUN



Wulfrun Shopping Centre, Wolverhampton, West Midlands WV1 3HH



PRIMARK®

PANDORA™  
Poundland

GREGGS  
savers

Iceland  
Specsavers®  
Opticians

Card Factory  
SUBWAY

ceX





Local to approx.  
**23,000**  
 University Students




**570**  
 Car Park Spaces




Single storey enclosed centre  
 of approximately

**200,000 sq.ft**

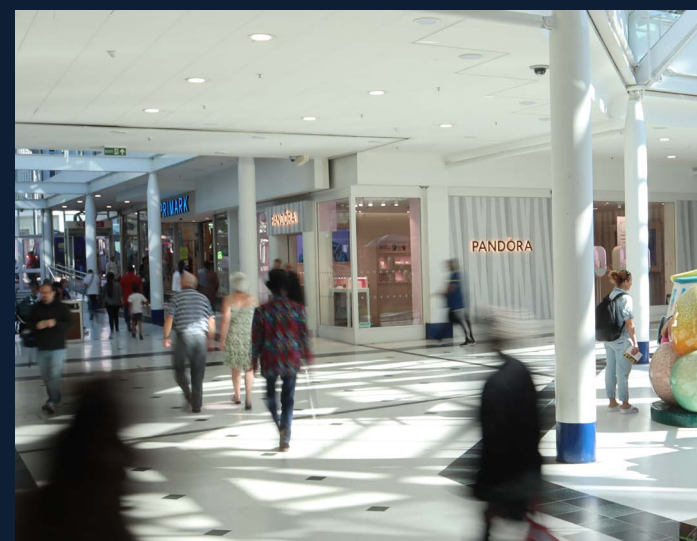



**9m**  
 Annual Footfall




**251k** Catchment Population  
 within a 20 minute drive\* time

\*estimated time of travel



## LOCATION – WV1 3HH

The City of Wolverhampton is situated within the north western part of the West Midlands conurbation which also includes the City of Birmingham, Walsall, Dudley and Sandwell.

## PARKING & TRANSPORT

- Main line rail link through Birmingham to London
- Midland Metro link directly to Birmingham City Centre
- Close to Junction 10 of the M6 & Junction 2 of the M54
- Onsite multi-storey car park with 570 spaces



# WULFRUN

## Shopping Centre, Wolverhampton



### Viewing

Strictly via prior appointment with the appointed agents



Oliver Marshall  
0788 778 7885  
oliver@fhp.co.uk



Guy Sankey  
0741 540 8196  
guy@creative-retail.co.uk

Owned and Managed by



Robert Ellis  
07918 931081  
REllis@lcpproperties.co.uk



Bruno Coppola  
07503 212474  
BCoppola@lcpproperties.co.uk

### MISREPRESENTATION ACT 1967

London & Cambridge Properties Limited (Company Number 02895002) the registered office of which is at LCP House, Pensnett Estate, Kingswinford, West Midlands DY6 7NA, its subsidiaries (as defined in section 1156 of the Companies Act 2006) associated companies and employees ("we") give notice that: Whilst these particulars are believed to be correct no guarantee or warranty is given, or implied therein, nor do they form any part of a contract. [We do our best to ensure all information in this brochure is accurate. If you find any inaccurate information, please let us know and where appropriate, we will correct it.] We make no representation that information is accurate and up to date or complete. We accept no liability for any loss or damage caused by inaccurate information. [This brochure gives a large amount of [statistical] information and there will inevitably be errors in it]. Intending purchasers or tenants should not rely on the particulars in this brochure as statements or representations of fact but should satisfy themselves by inspection or otherwise as to the correctness of each of them. We provide this brochure free of charge and on the basis of no liability for the information given. In no event shall we be liable to you for any direct or indirect or consequential loss, loss of profit, revenue or goodwill arising from your use of the information contained herein. All terms implied by law are excluded to the fullest extent permitted by law. No person in our employment has any authority to make or give any representation or warranty whatsoever in relation to the property.

### SUBJECT TO CONTRACT

We recommend that legal advice is taken on all documentation before entering into a contract. You should be aware that the Code of Practice on Commercial Leases in England and Wales strongly recommends you seek professional advice from a qualified surveyor, solicitor or licensed conveyancer before agreeing or signing a business tenancy agreement. The Code is available through professional institutions and trade associations or through the website <https://www.rics.org/uk/upholding-professional-standards/sector-standards/real-estate/code-for-leasing-business-premises-1st-edition/>. LCP's privacy notices that apply to its use of your personal information are at [www.lcpgroup.co.uk/policies](http://www.lcpgroup.co.uk/policies). The privacy notice that applies to you will depend on the nature of your relationship with LCP, and in some cases more than one may apply to you. LCP's privacy policy giving a high level overview of how LCP approaches data protection and your personal information can be found at [www.lcpproperties.co.uk/uploads/files/LCP-Privacy-Web-and-Data-Policy-May-2018.pdf](http://www.lcpproperties.co.uk/uploads/files/LCP-Privacy-Web-and-Data-Policy-May-2018.pdf).

01-05-26 MAY26

[thewulfrunshoppingcentre.co.uk](http://thewulfrunshoppingcentre.co.uk)