



TO LET

Retail Unit

1,386 sq.ft

(128.74 sq.m)

10 North Walk, Cwmbran Shopping Centre

- Town Centre footfall c.20m pa
- Shopping Centre is anchored by Primark, Dunelm, The Range and JD Sports
- Nearby retailers include Domino's, Wetherspoons, McDonalds and Subway
- 3,500 free car parking spaces

M **M[®]Core**
LCP UK

01179
902200

lcpgroup.co.uk



10 North Walk, Cwmbran Shopping Centre

Areas (approx. NIA)	Sq.ft	Sq.m
Ground Floor Sales	910	84.54
First Floor	476	44.20
TOTAL	1,386	128.74

Description

The unit is located on North Walk opposite Santander with nearby retailers including Subway and Poundland. Cwmbran Shopping Centre is anchored by Dunelm, The Range, and JD Sports and provides 3,500 free car parking spaces.

Rent

£32,950 per annum.

Rates

Rateable value £26,750 per annum. Interested parties are advised to contact the local authority to confirm their liabilities and any transitional relief.

Services

The unit has electricity connected.

Service Charge

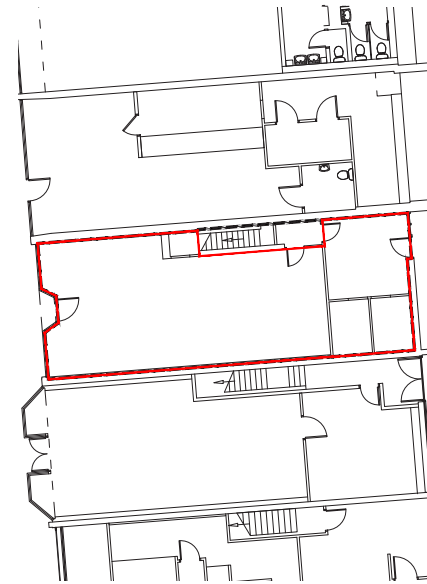
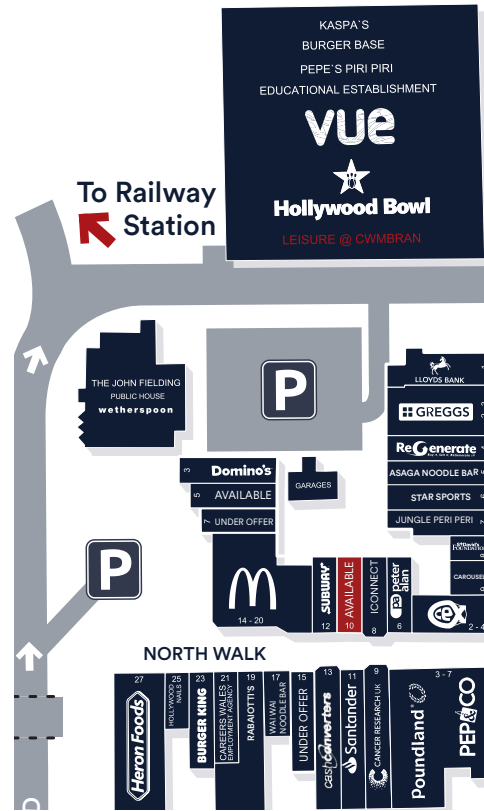
A service charge of £11,307.23 per annum will be levied for the maintenance of the site.

Insurance

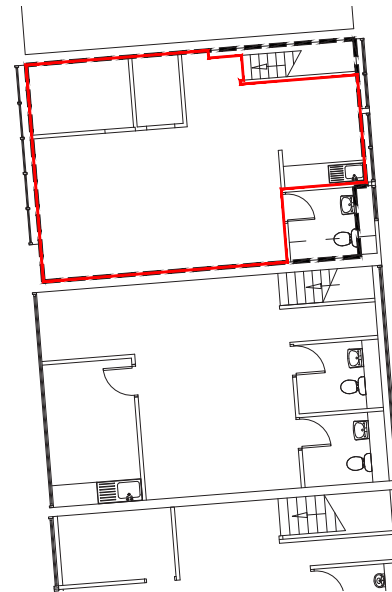
Insurance £1,060 per annum. The Landlord will insure the premises, the premiums to be recovered from the tenant.

Energy Performance

10 North Walk has an EPC Rating of D. Further information available upon request.



Ground Floor Plan



First Floor Plan

Viewing

Strictly via prior appointment with the appointed agents:



Philip Gwyther 07775 910994
philip@ejhales.co.uk



020 3058 0200
www.mcmullenre.com

Mark Crookes 07831 265072
mcrookes@mcmullenre.com

Peter Barker 07960 978795
pbarker@mcmullenre.com

Owned and Managed by



01179
902200

lcpgroup.co.uk



Adam Martin 07825 091440
AMartin@lcpproperties.co.uk

MISREPRESENTATION ACT, 1967 London & Cambridge Properties Limited (Company Number 02895002) the registered office of which is at LCP House, Pensnett Estate, Kingswinford, West Midlands DY6 7NA its subsidiaries (as defined in section 1156 of the Companies Act 2006) associated companies and employees ("we") give notice that: Whilst these particulars are believed to be correct no guarantee or warranty is given, or implied therein, nor do they form any part of a contract. [We do our best to ensure all information in this brochure is accurate. If you find any inaccurate information, please let us know and where appropriate, we will correct it.] We make no representation that information is accurate and up to date or complete. We accept no liability for any loss or damage caused by inaccurate information. [This brochure gives a large amount of [statistical] information and there will inevitably be errors in it]. Intending purchasers or tenants should not rely on the particulars in this brochure as statements or representations of fact but should satisfy themselves by inspection or otherwise as to the correctness of each of them. We provide this brochure free of charge and on the basis of no liability for the information given. In no event shall we be liable to you for any direct or indirect or consequential loss, loss of profit, revenue or goodwill arising from your use of the information contained herein. All terms implied by law are excluded to the fullest extent permitted by law. No person in our employment has any authority to make or give any representation or warranty whatsoever in relation to the property. SUBJECT TO CONTRACT. We recommend that legal advice is taken on all documentation before entering into a contract. You should be aware that the Code of Practice on Commercial Leases in England and Wales strongly recommends you seek professional advice from a qualified surveyor, solicitor or licensed conveyancer before agreeing or signing a business tenancy agreement. The Code is available through professional institutions and trade associations or through the website: <https://www.rics.org/uk/upholding-professional-standards/sector-standards/real-estate/code-for-leasing-business-premises-1st-edition/>. LCP's privacy notices that apply to its use of your personal information are at www.lcpgroup.co.uk/policies. The privacy notice that applies to you will depend on the nature of your relationship with LCP, and in some cases more than one may apply to you. LCP's privacy policy giving a high level overview of how LCP approaches data protection and your personal information can be found at www.lcpproperties.co.uk/uploads/files/LCP-Privacy-Web-and-Data-Policy-May-2018.pdf.