

LEASING *brochure*

UNIT 24

A prime retail opportunity located on the ground floor in the heart of Princes Square.

5 New tenants welcomed within the last 18 months.

Situated in close proximity to an unrivalled mix of high street brands, designer labels, and outstanding boutiques under one elegant roof.

RECENT LETTINGS:

OMNES | Cuvée
Le Set | Marcel

**SUBJECT
TO VP**





DETAILS

	SQ.FT	SQ.M
Internal	1,045	97
Total	1,045	97

Rent

- £50,000 pax

Rates Payable

- £18,157.75

Service Charge

- £21,879

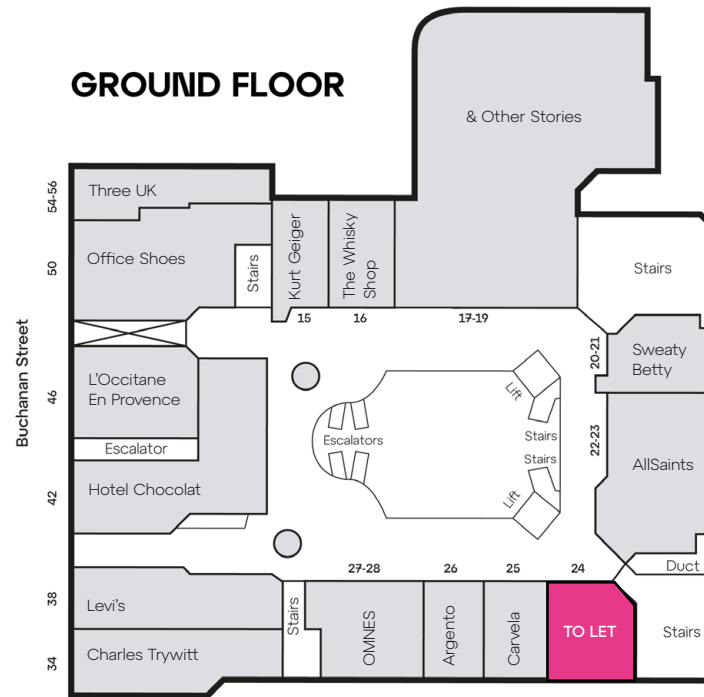
Insurance

- £622

EPC

- Available upon request.

GROUND FLOOR





CONTACT

Rakesh Joshi

T +44 (0)7741 385 322

E rjoshi@lcpproperties.co.uk



Alex Williams

M +44 (0)7741 951843

E awilliams@lcpproperties.co.uk

Stuart Moncur

M +44 (0)7887 795 506

E stuart.moncur@savills.com



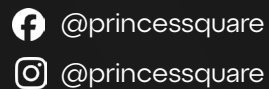
Charlie Hall

M +44 (0)7807 999 693

E charlie.hall@savills.com



MISREPRESENTATION ACT, 1967 London & Cambridge Properties Limited (Company Number 02895002) the registered office of which is at LCP House, Pennsett Estate, Kingswinford, West Midlands DY6 7NA its subsidiaries (as defined in section 1156 of the Companies Act 2006) associated companies and employees ("we") give notice that: Whilst these particulars are believed to be correct no guarantee or warranty is given, or implied therein, nor do they form any part of a contract. [We do our best to ensure all information in this brochure is accurate. If you find any inaccurate information, please let us know and where appropriate, we will correct it.] We make no representation that information is accurate and up to date or complete. We accept no liability for any loss or damage caused by inaccurate information. [This brochure gives a large amount of [statistical] information and there will inevitably be errors in it]. Intending purchasers or tenants should not rely on the particulars in this brochure as statements or representations of fact but should satisfy themselves by inspection or otherwise as to the correctness of each of them. We provide this brochure free of charge and on the basis of no liability for the information given. In no event shall we be liable to you for any direct or indirect or consequential loss, loss of profit, revenue or goodwill arising from your use of the information contained herein. All terms implied by law are excluded to the fullest extent permitted by law. No person in our employment has any authority to make or give any representation or warranty whatsoever in relation to the property. SUBJECT TO CONTRACT. We recommend that legal advice is taken on all documentation before entering into a contract. You should be aware that the Code of Practice on Commercial Leases in England and Wales strongly recommends you seek professional advice from a qualified surveyor, solicitor or licensed conveyancer before agreeing or signing a business tenancy agreement. The Code is available through professional institutions and trade associations or through the website <https://www.rics.org/uk/upholding-professional-standards/sector-standards/real-estate/code-for-leasing-business-premises-1st-edition/>. LCP's privacy notices that apply to its use of your personal information are at www.lcpgroup.co.uk/policies. The privacy notice that applies to you will depend on the nature of your relationship with LCP, and in some cases more than one may apply to you. LCP's privacy policy giving a high level overview of how LCP approaches data protection and your personal information can be found at www.lcpproperties.co.uk/uploads/files/LCP-Privacy-Web-and-Data-Policy-May-2018.pdf.



princesssquare.co.uk

MAY 2026