



# TO LET

Retail Unit

4,185 sq.ft

(388.7 sq.m)

## 18 The Mall, Cwmbran Shopping Centre

- Town Centre footfall c.20m pa
- Shopping Centre is anchored by Primark, Dunelm, The Range and JD Sports
- Nearby retailers include Domino's, Wetherspoons, McDonalds and Subway
- 3,500 free car parking spaces

**M Core**  
LCP UK

01179  
902200

lcpgroup.co.uk

# 18 The Mall, Cwmbran Shopping Centre

Areas (approx. NIA)	Sq.ft	Sq.m
Ground Floor Sales	2,766	256.9
First Floor	1,419	131.8
<b>TOTAL</b>	<b>4,185</b>	<b>388.7</b>

## Description

The unit is located on The Mall opposite the Post Office with nearby retailers including HMV and Clintons. Cwmbran Shopping Centre is anchored by Dunelm, The Range, and JD Sports and provides 3,500 free car parking spaces.

## Rent POA

## Rates

Interested parties are advised to contact the local authority to confirm their liabilities and any transitional relief.

## Services

The unit has electricity connected.

## Service Charge

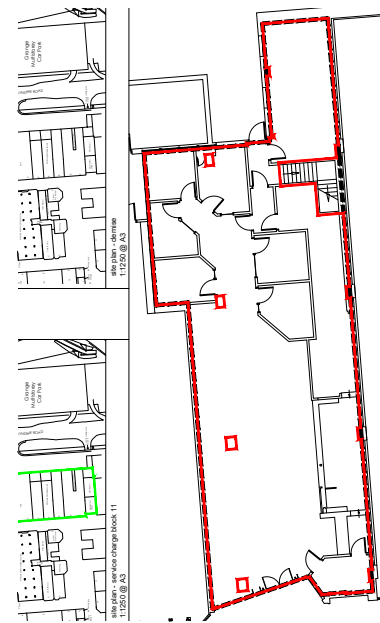
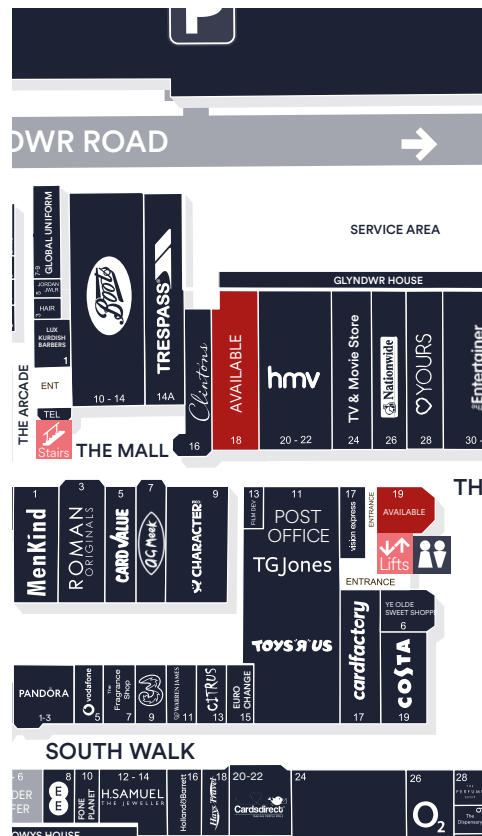
A service charge of £27,155 per annum will be levied for the maintenance of the site.

## Insurance

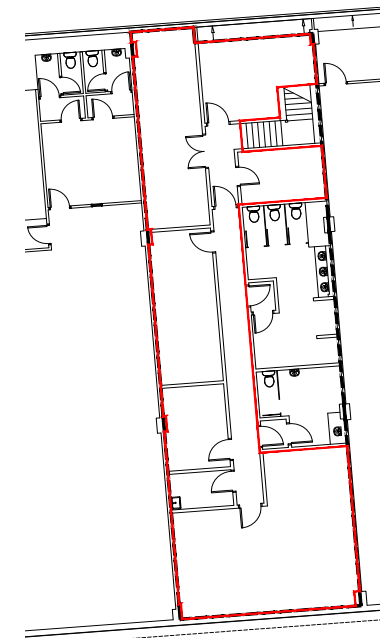
Insurance £3,200 per annum (25/26). The Landlord will insure the premises, the premiums to be recovered from the tenant.

## Energy Performance

18 The Mall has an EPC Rating of C.  
Further information available upon request.



Ground Floor Plan



First Floor Plan

## Viewing

Strictly via prior appointment  
with the appointed agents:



**Philip Gwyther** 07775 910994  
philip@ejhales.co.uk



**020 3058 0200**  
www.mcmullenre.com

**Mark Crookes** 07831 265072  
mcrookes@mcmullenre.com

**Peter Barker** 07960 978795  
pbarker@mcmullenre.com

Owned and Managed by



**01179  
902200**

lcpgroup.co.uk



**Adam Martin** 07825 091440  
AMartin@lcpproperties.co.uk

MISREPRESENTATION ACT, 1967 London & Cambridge Properties Limited (Company Number 02895002) the registered office of which is at LCP House, Pensnett Estate, Kingswinford, West Midlands DY6 7NA its subsidiaries (as defined in section 1156 of the Companies Act 2006) associated companies and employees ("we") give notice that: Whilst these particulars are believed to be correct no guarantee or warranty is given, or implied therein, nor do they form any part of a contract. [We do our best to ensure all information in this brochure is accurate. If you find any inaccurate information, please let us know and where appropriate, we will correct it.] We make no representation that information is accurate and up to date or complete. We accept no liability for any loss or damage caused by inaccurate information. [This brochure gives a large amount of [statistical] information and there will inevitably be errors in it]. Intending purchasers or tenants should not rely on the particulars in this brochure as statements or representations of fact but should satisfy themselves by inspection or otherwise as to the correctness of each of them. We provide this brochure free of charge and on the basis of no liability for the information given. In no event shall we be liable to you for any direct or indirect or consequential loss, loss of profit, revenue or goodwill arising from your use of the information contained herein. All terms implied by law are excluded to the fullest extent permitted by law. No person in our employment has any authority to make or give any representation or warranty whatsoever in relation to the property. SUBJECT TO CONTRACT. We recommend that legal advice is taken on all documentation before entering into a contract. You should be aware that the Code of Practice on Commercial Leases in England and Wales strongly recommends you seek professional advice from a qualified surveyor, solicitor or licensed conveyancer before agreeing or signing a business tenancy agreement. The Code is available through professional institutions and trade associations or through the website: https://www.rics.org/uk/upholding-professional-standards/sector-standards/real-estate/code-for-leasing-business-premises-1st-edition/. LCP's privacy notices that apply to its use of your personal information are at www.lcpgroup.co.uk/policies. The privacy notice that applies to you will depend on the nature of your relationship with LCP, and in some cases more than one may apply to you. LCP's privacy policy giving a high level overview of how LCP approaches data protection and your personal information can be found at www.lcpproperties.co.uk/uploads/files/LCP-Privacy-Web-and-Data-Policy-May-2018.pdf.